

Colibri

По вопросам продаж и поддержки обращайтесь:

Алматы (7273)495-231
Архангельск (8182)63-90-72
Астрахань (8512)99-46-04
Барнаул (3852)73-04-60
Белгород (4722)40-23-64
Брянск (4832)59-03-52
Владивосток (423)249-28-31
Волгоград (844)278-03-48
Вологда (8172)26-41-59
Воронеж (473)204-51-73
Екатеринбург (343)384-55-89
Иваново (4932)77-34-06
Ижевск (3412)26-03-58
Иркутск (395)279-98-46
Россия (495)268-04-70

Казань (843)206-01-48
Калининград (4012)72-03-81
Калуга (4842)92-23-67
Кемерово (3842)65-04-62
Киров (8332)68-02-04
Краснодар (861)203-40-90
Красноярск (391)204-63-61
Курск (4712)77-13-04
Липецк (4742)52-20-81
Магнитогорск (3519)55-03-13
Москва (495)268-04-70
Мурманск (8152)59-64-93
Набережные Челны (8552)20-53-41
Нижний Новгород (831)429-08-12
Киргизия (996)312-96-26-47

Новокузнецк (3843)20-46-81
Новосибирск (383)227-86-73
Омск (3812)21-46-40
Орел (4862)44-53-42
Оренбург (3532)37-68-04
Пенза (8412)22-31-16
Пермь (342)205-81-47
Ростов-на-Дону (863)308-18-15
Рязань (4912)46-61-64
Самара (846)206-03-16
Санкт-Петербург (812)309-46-40
Саратов (845)249-38-78
Севастополь (8692)22-31-93
Симферополь (3652)67-13-56
Казахстан (7172)727-132

Смоленск (4812)29-41-54
Сочи (862)225-72-31
Ставрополь (8652)20-65-13
Сургут (3462)77-98-35
Тверь (4822)63-31-35
Томск (3822)98-41-53
Тула (4872)74-02-29
Тюмень (3452)66-21-18
Ульяновск (8422)24-23-59
Уфа (347)229-48-12
Хабаровск (4212)92-98-04
Челябинск (351)202-03-61
Череповец (8202)49-02-64
Ярославль (4852)69-52-93

One software platform
for the global color supply chain






Colibri is a color management and matching solution like no other, a fully modular software platform for color control, scalable from one site to a global supply chain whilst maintaining strict control and data ownership. The solution allows streamlining of the entire supply process from specification to color matching to QC.

The Colibri® modules are:

- **ColorSpec** – for the specification of brand colours and standards
- **ColorMatch** – for colour matching and prediction of colour and opacity in different applications and on a variety of substrates
- **ColorQuality** – for monitoring, certification and final approval of coloured products
- **ColorTint** – for both manual and automatic dispensing of colour recipes in lab, production or at the POS

Colibri® is suitable for single-client and small businesses as well as for large global enterprise installation. Utilising the latest in information technology, it can also be hosted in the cloud or in your own network environment. Take advantage of both our industry expertise and our assistance with:

- Specification of brand colours
- Customization of colour standards
- Colour management for the entire value chain
- Colour measurement with the associated application support
- Colour communication tools and services
- Accelerated creation of quality products
- Connection with enterprise resource planning tools and other third party software products

	Color Design & Specification		Production & Supply		
	design	specify	produce	control & approve	supply
 ColorSpec	■	■	■		
 ColorMatch		■	■		
 ColorTint			■		
 ColorQuality		■	■	■	
Solution Integration	■	■	■	■	■
					

Konica Minolta Sensing is a distributor of matchmycolor LLC for software and services.

Colibri® is a registered trademark of matchmycolor LLC; Microsoft®, Windows® 7, Windows® 8 and Windows® 10 are registered trademarks of Microsoft Corporation.

ColorSpec



Colibri® ColorSpec enables creative and prepress designers, brand owners, manufacturers and material producers to use real colours in their artwork. Users can define colour standards, dependent standards and related tolerances for their products, and communicate these brands, designs and standards to their suppliers.

Colibri® ColorSpec features and benefits include:

- Management of brands and designs
- Mark-up of designs for accurate and consistent colour monitoring
- Definition, standardization and referencing of shades
- Store historical data of colour standards
- Improved communication between brand owners, manufacturers and their suppliers
- Increased cooperation between supply chain participants
- Seamless transfer of colour standards, catalogues and substrates to third-party software

Colibri® ColorSpec helps you manage your complete colour palette, from colour standard specification, to development and digital compliance criteria and ultimately individual supplier review.

Additional options

Color Plugin

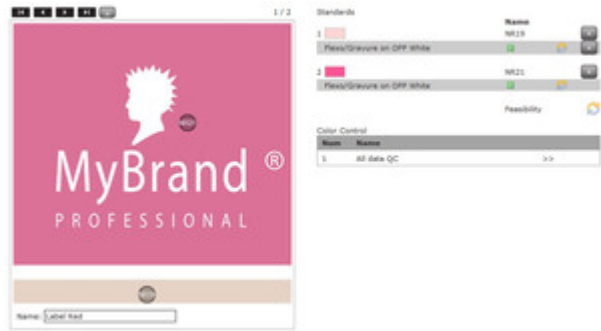
Developed for use with Adobe Illustrator® design software, this Add-on allows creative and prepress designers to connect to the Colibri® central database and select approved brand colours as well as real colour standards based on spectral colour data for use in their artworks. Designers have the option of working offline but need to re-connect to Colibri® to ascertain colour data approval status.

Color Feasibility

Predict colour feasibility and consistency across a variety of technologies, applications and substrates in an early stage of the colour specification. This tool is based on real colorant data, but has been developed with userfriendly templates to simplify the process of colour feasibility right at the start of the development process.



Management of Brands and Designs



Colourfeasibility Check in the design stage

Konica Minolta Sensing is a distributor of matchmycolor LLC for software and services.

Colibri® is a registered trademark of matchmycolor LLC; Microsoft®, Windows® 7, Windows® 8 and Windows® 10 are registered trademarks of Microsoft Corporation.

ColorMatch



Colibri® ColorMatch is efficient, powerful and easy to use. Using a proprietary algorithm it ensures accurate matching of colour and opacity on opaque, translucent and transparent materials as well as metallic effects while reducing the number of correction steps. Users can easily switch between several base materials helping to save time and resources in all stages of the matching process.

Colibri® ColorMatch features and benefits include:

- User-friendly, intuitive and seamless interface
- Highly efficient matching of opaque, translucent and transparent colors
- Recipe calculation on different substrates
- Vary base material as required, using only one colorant library
- Simplifies the use of leftover materials, reducing waste and costs
- Customization of functionality and feature settings to match your application and workflow
- An integrated “Expert System”, allowing pigment pre-selection according to application requirements to simplify use of parameters such as light fastness or other criterias.
- One standard recipe to calculate every possible colour recipe combination

- Automatic database update with every change in colour strength, allowing for colour fluctuations in base materials
- User management, access rights and permissions management using existing enterprise IT management tools
- Compatibility with all Konica Minolta as well as the majority of other brand spectrophotometers

Additional options:

Batch Recipe Calculator

Calculates and stores “the best recipe” for specified colour data files or whole colour catalogues using pre-defined matching templates in a predefined order. This Add-on is essential for recipe creation for POS applications.

It also allows users to replace components in master recipes systematically and to check the quality of the updated recipes prior to the final replacement.

3D Color Gamut Viewer

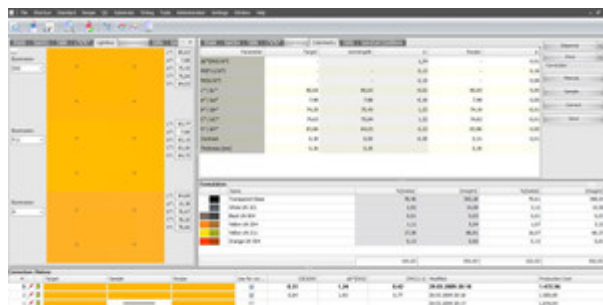
Allows to view colour recipes, catalogues and standard collections in the CIELAB colour space. It displays true colour hulls and colour points and enables users to follow the colour travel of effect pigments, to identify and reduce the number of similar products in a range as well as to spot the gaps in the colour space.

Quality Control

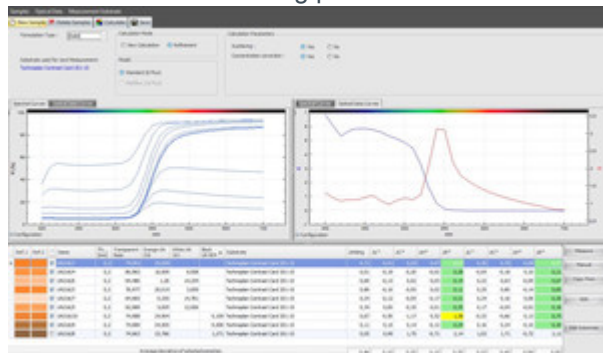
Add-on for Quality Control with similar features as Module Colibri® ColorQuality

Tinting

Add-on for Dispensing with similar features as Module Colibri® ColorTint



Result table of a matching process



Optical data analysis of a colourant

Colibri® is a registered trademark of matchmycolor LLC; Microsoft®, Windows® 7, Windows® 8 and Windows® 10 are registered trademarks of Microsoft Corporation.

ColorQuality



Colibri® ColorQuality enables manufacturers and suppliers to manage and control production. The “Job” function helps to organize quality control tasks, no matter of application or requirement. Flexible creation of job displays and job reports is possible to meet internal or external requests.

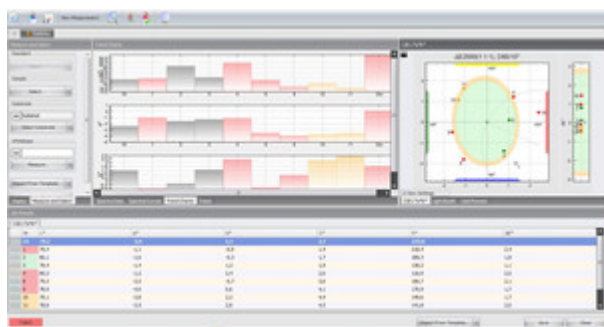
Colibri® ColorQuality features and benefits include:

- Improved colour communication between management, production and partners
- Increased cooperation between supply chain participants
- Fast assessment of the conformity of production to a standard under different illuminants
- Visual display of limits on screen
- Availability of the most common pass / fail criteria, including delta E (CIE Lab), CIE 94, CMC, FMC-2 and Hunter Lab
- Chart mode enables to see at a glance where and how deviations affect the colour
- Template function allows to optimize the workflow of end users
- Selection of colour strength methods, help to determine the quality and consistency of production batches
- Compatibility with multi-angle measurement devices, improves control over the quality of effect shades

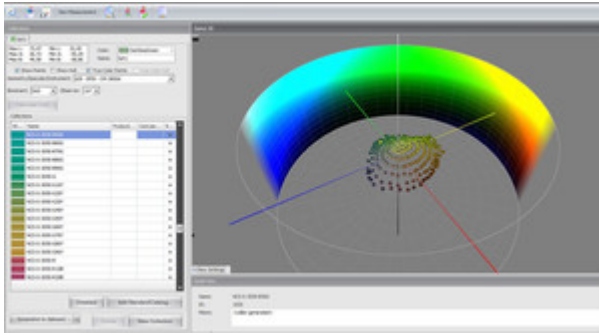
Additional options

3D Color Gamut Viewer

Allows to view colour recipes, catalogues and standard collections in the CIELAB colour space. It displays true colour hulls and colour points and enables to follow the colour travel of effect pigments, to identify and reduce the number of similar products in a range as well as to spot the gaps in the colour space.



Result table and graphical display of a QC Job



3-D display of a choice of colours

Konica Minolta Sensing is a distributor of matchmycolor LLC for software and services.

Colibri® is a registered trademark of matchmycolor LLC; Microsoft®, Windows® 7, Windows® 8 and Windows® 10 are registered trademarks of Microsoft Corporation.

ColorTint



Colibri® ColorTint is designed to control the dispensing of colour products (new orders and batch additions) on tinting machines. ColorTint helps to produce the quality expected in different can sizes and with different pre-fillings. Connections to various tinting machines are available.

Features and benefits of Colibri® ColorTint:

- Fast access to recipes developed from colour standards and colour catalogues.
- Accurate recipe transfer to dispensing machines improves quality of production.
- Simple workflows and automatic communication with your dispensing machine help to reduce time-to-supply.
- Customization to filling conditions gives you the flexibility to supply to order.
- Easy connection to large enterprise networks facilitates scale up to production.

Konica Minolta Sensing is a distributor of matchmycolor LLC for software and services.

Colibri® is a registered trademark of matchmycolor LLC; Microsoft®, Windows® 7, Windows® 8 and Windows® 10 are registered trademarks of Microsoft Corporation.

По вопросам продаж и поддержки обращайтесь:

Алматы (7273)495-231
Архангельск (8182)63-90-72
Астрахань (8512)99-46-04
Барнаул (3852)73-04-60
Белгород (4722)40-23-64
Брянск (4832)59-03-52
Владивосток (423)249-28-31
Волгоград (844)278-03-48
Вологда (8172)26-41-59
Воронеж (473)204-51-73
Екатеринбург (343)384-55-89
Иваново (4932)77-34-06
Ижевск (3412)26-03-58
Иркутск (395)279-98-46
Россия (495)268-04-70

Казань (843)206-01-48
Калининград (4012)72-03-81
Калуга (4842)92-23-67
Кемерово (3842)65-04-62
Киров (8332)68-02-04
Краснодар (861)203-40-90
Красноярск (391)204-63-61
Курск (4712)77-13-04
Липецк (4742)52-20-81
Магнитогорск (3519)55-03-13
Москва (495)268-04-70
Мурманск (8152)59-64-93
Набережные Челны (8552)20-53-41
Нижний Новгород (831)429-08-12
Киргизия (996)312-96-26-47

Новокузнецк (3843)20-46-81
Новосибирск (383)227-86-73
Омск (3812)21-46-40
Орел (4862)44-53-42
Оренбург (3532)37-68-04
Пенза (8412)22-31-16
Пермь (342)205-81-47
Ростов-на-Дону (863)308-18-15
Рязань (4912)46-61-64
Самара (846)206-03-16
Санкт-Петербург (812)309-46-40
Саратов (845)249-38-78
Севастополь (8692)22-31-93
Симферополь (3652)67-13-56
Казахстан (7172)727-132

Смоленск (4812)29-41-54
Сочи (862)225-72-31
Ставрополь (8652)20-65-13
Сургут (3462)77-98-35
Тверь (4822)63-31-35
Томск (3822)98-41-53
Тула (4872)74-02-29
Тюмень (3452)66-21-18
Ульяновск (8422)24-23-59
Уфа (347)229-48-12
Хабаровск (4212)92-98-04
Челябинск (351)202-03-61
Череповец (8202)49-02-64
Ярославль (4852)69-52-93